

Solar Toilet Pod



DIESEL / HVO
Heating & Hot Water
System



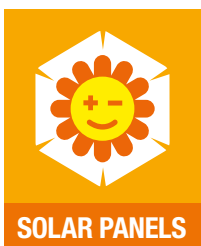
**Self sufficient toilet facilities,
perfect for remote site locations.**

Hot water & heating is supplied by an efficient diesel heating system. Pumps and lighting powered by roof mounted solar panels. No need for power or water hook ups or waste connections.

Single

1+1

2+2



SOLAR PANELS



**DIESEL / HVO
HEATING**

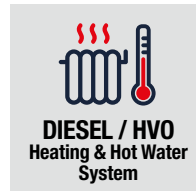
**Ultra-Low
emissions
with HVO
Fuel**





Solar Toilet Pod

Patent Pending



Built for a tough life

Unique patented, high strength, composite panels

Cubicle

- Fresh flush toilet
- Mirror
- LED downlight
- Ventilation
- Coat hooks
- Heating outlet

Sustainability

- Solar for sustainable free energy with patent pending technology
- Reduced fuel consumption
- Reduced CO2 emissions
- Ultra-low emissions with HVO Fuel

Facilities

- **Single =**
250 litre water tank
400 litre waste tank
- **1+1 =**
250 litre water tank
x2 400 litre waste tanks
- **2+2 =**
500 litre water tank
x4 400 litre waste tanks
- "Waste full & Water empty" Warning indicators
- Webasto Diesel HVO Heating & hot water system
- 42 litre Fuel Tank
- OPTIONAL: 16A electrical input socket for mains charging
- OPTIONAL: External connections for waste or water

External

Walls: Constructed from unique patented (2448660) high strength composite panels. Galvanised steel exterior, seamless GRP interior and high density foam insulation

Roof: Seamless insulated composite panel.

Floor: 15mm plywood with slip and wear resistant phenolic coating.

Chassis: Heavy duty galvanised steel.

Doors: High security composite doors with 2 deadlocks.



Solar PV Panels



Webasto Heating System



Cabin security - Deadlocks

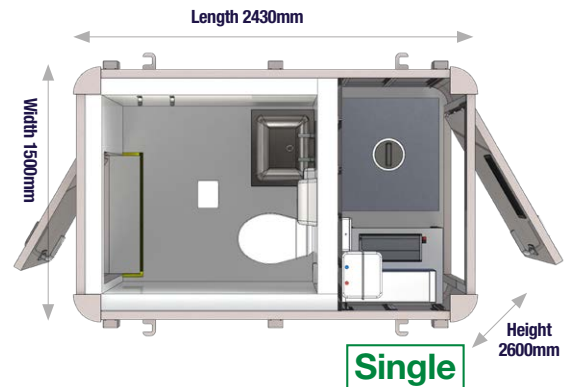


Heating Controls

Tank level indicators



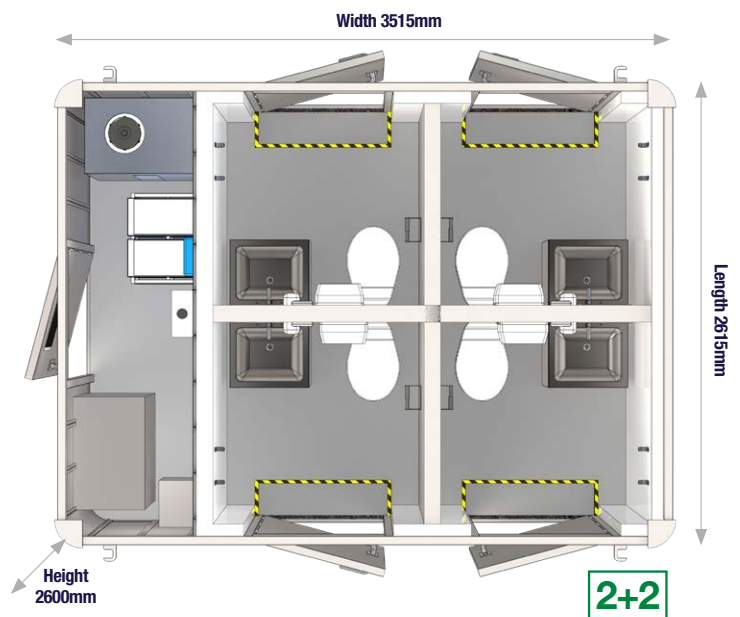
Fresh flush toilet



Single



1+1



2+2

AJC EasyCabin

www.easycabin.co.uk

01582 486663

info@easycabin.co.uk

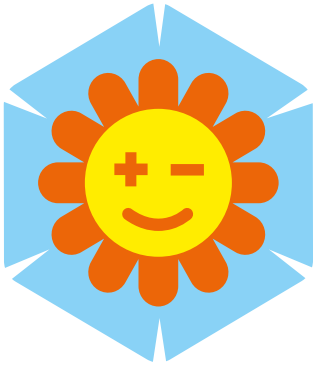


DESIGNED & BUILT IN THE UK

EasyCabin Head Office & Factory, Unit 10, Cosgrove Way, Luton, Beds, LU1 1XL



As part of our on-going commitment to improvement we reserve the right to alter specifications, designs or figures, without prior notice. All dimensions and weights are approximate.



Solar Toilet Pod



Hot Water System



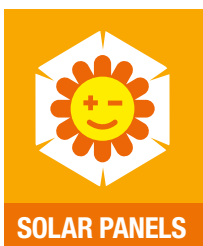
**Self sufficient toilet facilities,
perfect for remote site locations.**

Available in 3 sizes. Hot water is supplied by an efficient LPG gas boiler, pumps and lighting powered by roof mounted solar panels. No need for power or water hook ups or waste connections.

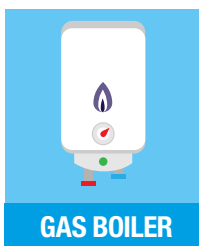
Single

1+1

2+2



SOLAR PANELS



GAS BOILER

**Up to
96%
CO₂
efficient**



AJC EasyCabin

Site welfare is easy.



Solar Toilet Pod

Patent Pending



Built for a tough life

Unique patented, high strength, composite panels

Cubicle

- Fresh flush toilet
- Mirror
- LED downlight
- Ventilation
- Coat hooks

Facilities

- **Single =**
250 litre water tank
400 litre waste tank
- **1+1 =**
250 litre water tank
x2 400 litre waste tanks
- **2+2 =**
500 litre water tank
x4 400 litre waste tanks
- LPG Gas boiler
- "Waste full & Water empty" Warning indicators
- OPTIONAL: External connections for waste or water

Sustainability

- Solar for sustainable free energy with patent pending technology
- Reduced fuel consumption
- Reduced CO2 emissions

External

Walls: Constructed from unique patented (2448660) high strength composite panels. Galvanised steel exterior, seamless GRP interior and high density foam insulation

Roof: Seamless insulated composite panel.

Floor: 15mm plywood with slip and wear resistant phenolic coating.

Chassis: Heavy duty galvanised steel.

Doors: High security composite doors with 2 deadlocks.



Solar PV Panels



Efficient boiler



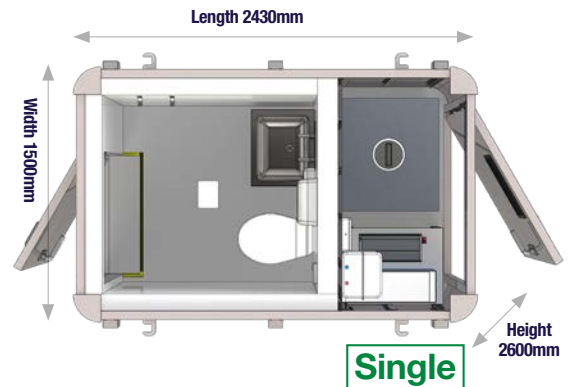
Cabin security - Deadlocks



OPTIONAL Water connection



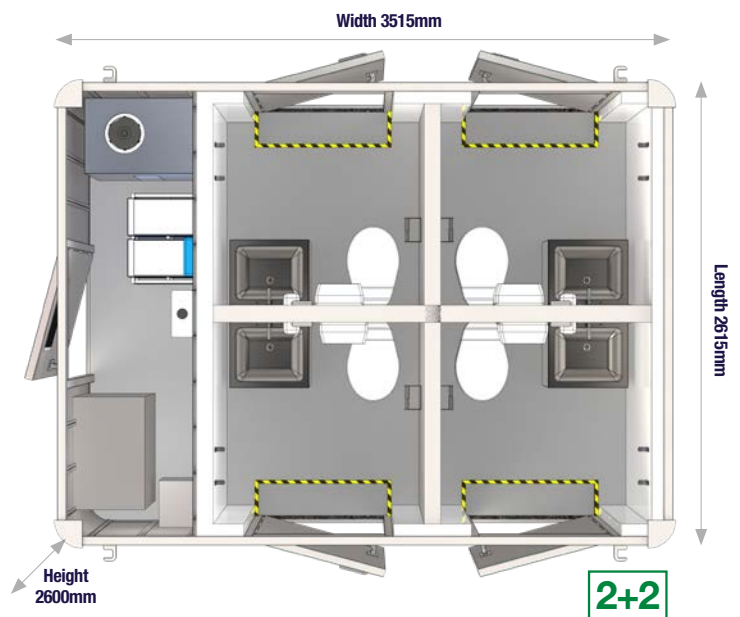
Fresh flush toilet



Single



1+1



2+2

AJC EasyCabin

www.easycabin.co.uk

01582 486663

info@easycabin.co.uk

DESIGNED & BUILT IN THE UK

EasyCabin Head Office & Factory, Unit 10, Cosgrove Way, Luton, Beds, LU1 1XL



As part of our on-going commitment to improvement we reserve the right to alter specifications, designs or figures, without prior notice. All dimensions and weights are approximate.