

# Office Trailers



## High-Quality Mobile Office Accommodation for Temporary & Semi-Permanent Sites



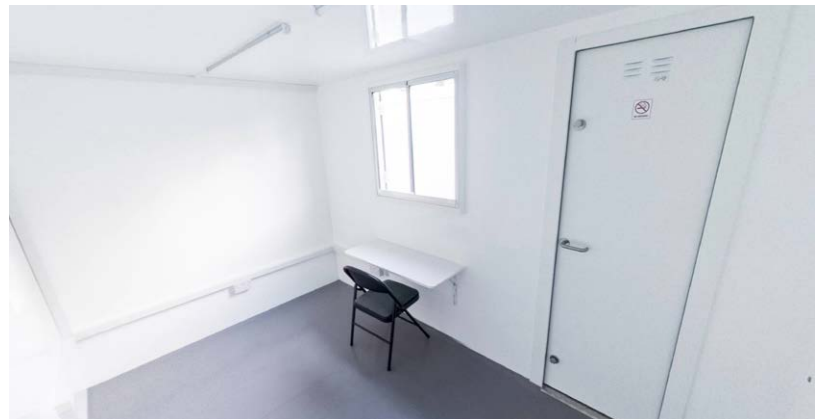
### Mobile Office

The EasyCabin Mobile Office range provides a secure, comfortable and professional towable office solution for construction sites, infrastructure projects, utilities and hire fleets.

Built using the same high-performance composite panel system as our Ecosmart mobile welfare units, these mobile offices deliver outstanding durability, insulation and ease of use, without compromising mobility. Available in three sizes, designed to be quick to deploy, easy to relocate and comfortable to work in all year round.

The Mobile Office is designed to work with a mains power external power hook-up. Plug into mains via the 16A 3 pin socket to power lighting, heating & sockets.

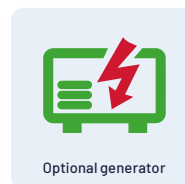
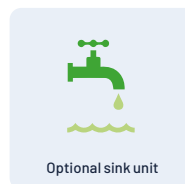
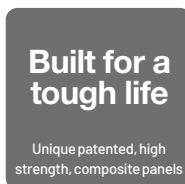
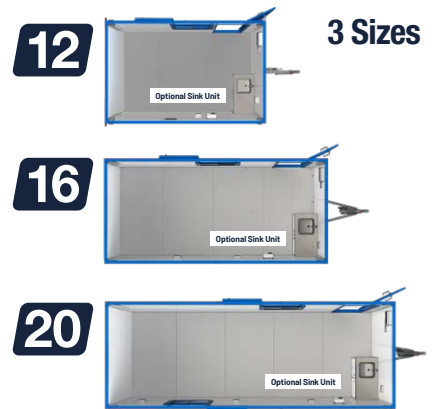
An off-grid upgrade is available, using the same Ecosmart systems & generator from our welfare unit range.



### Comfortable & Fully Equipped Interior

Designed for everyday use on active sites, each Mobile Office includes:

- Wall-mounted heater**
- 230v Sockets & USB Charging**
- Low-wattage LED lighting**
- Consumer unit with RCD and MCB protection**
- Slip-resistant phenolic-coated plywood floor**



# Features

# Mobile Office

## Movability

- Easy to tow
- 14" wheels with the ability in the event of a puncture to change at the side of the road with ease
- Road lights and number plate holder built in, No need for a tailboard to be fitted
- 4 corner jack legs for stability

## Security / Safety

- Dual heavy duty doors & hinges
- Robust composite steel exterior with high impact resistance
- Galvanised chassis and running gear
- Breakers / Consumer unit with RCD and MCB's
- Electrical certificate
- Carbon monoxide detector
- Integral steps

## Inside

- Easy to clean GRP interior walls
- Wall heater
- LED low wattage lights
- Optional sink unit
- Double power sockets mounted to walls

## Outside Upgrades

- Paint colours
- External signage
- Extra Windows
- Extra Doors

## Inside Upgrades

- Sink unit with pump and water heater
- Variety of shelf unit styles and sizes
- Desks & office chairs
- Variety of laminate flooring style options
- Extra power sockets
- White boards / Pin Boards

## Other Upgrades

- Choice of fire extinguisher types, CO2, lithium, powder etc.
- Air Conditioning Unit
- TV wall mount & Smart TV
- Built-in generator HVO Stage 5



	BOX LENGTH	<b>3815 mm</b>	<b>12.5 ft</b>
	LENGTH	<b>5250 mm</b>	<b>17.2 ft</b>
	WIDTH	<b>2480 mm</b>	<b>8.2 ft</b>
	HEIGHT	<b>2650 mm</b>	<b>8.7 ft</b>
	<b>WEIGHT</b>		
	UNLADEN	<b>1085 kg</b>	<b>2393 lb</b>
	GROSS	<b>1800 kg</b>	<b>3970 lb</b>

	BOX LENGTH	<b>4935 mm</b>	<b>16.2 ft</b>
	LENGTH	<b>6335 mm</b>	<b>20.7 ft</b>
	WIDTH	<b>2480 mm</b>	<b>8.2 ft</b>
	HEIGHT	<b>2650 mm</b>	<b>8.7 ft</b>
	<b>WEIGHT</b>		
	UNLADEN	<b>1446 kg</b>	<b>3187 lb</b>
	GROSS	<b>1800 kg</b>	<b>3970 lb</b>

	BOX LENGTH	<b>6076 mm</b>	<b>20 ft</b>
	LENGTH	<b>7510 mm</b>	<b>24.6 ft</b>
	WIDTH	<b>2480 mm</b>	<b>8.2 ft</b>
	HEIGHT	<b>2650 mm</b>	<b>8.7 ft</b>
	<b>WEIGHT</b>		
	UNLADEN	<b>1808 kg</b>	<b>3895 lb</b>
	GROSS	<b>2600 kg</b>	<b>5732 lb</b>



[www.easycabin.co.uk](http://www.easycabin.co.uk)

01582 486663

[info@easycabin.co.uk](mailto:info@easycabin.co.uk)

NOTE: As part of our on-going commitment to improvement we reserve the right to alter specifications, designs or figures, without prior notice. All dimensions and weights are approximate. Images shown include non-standard upgrades.