



# Ecosmart Sleeper 20

**The Ecosmart Sleeper 20 is built to a high specification inside and out to allow continued use over long periods.**

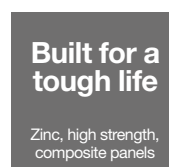
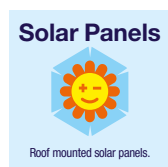
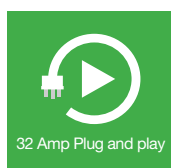
Designed and built for warmth and comfort, the Ecosmart Sleeper 20 offers unrivalled levels of luxury in a temporary accommodation unit.

The living area comprises of 2 beds and a spacious wardrobe. Heating is via an air heat pump and lighting from energy saving LED lamps. Air conditioning is fitted as standard.

Smoke, heat and CO2 detector included as standard for additional safety. There are also useful USB and electric sockets.

Ideally suited for construction, student, outdoor events and long term accommodation.

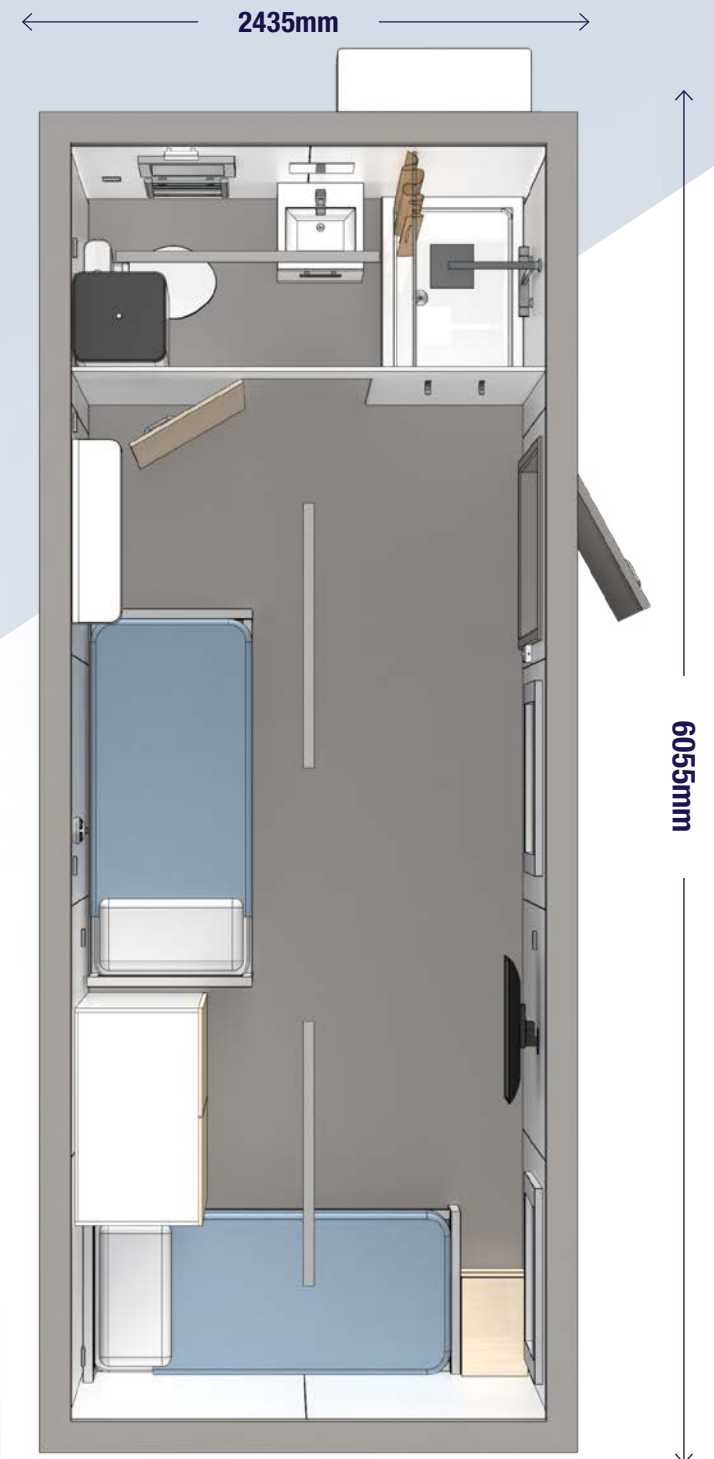
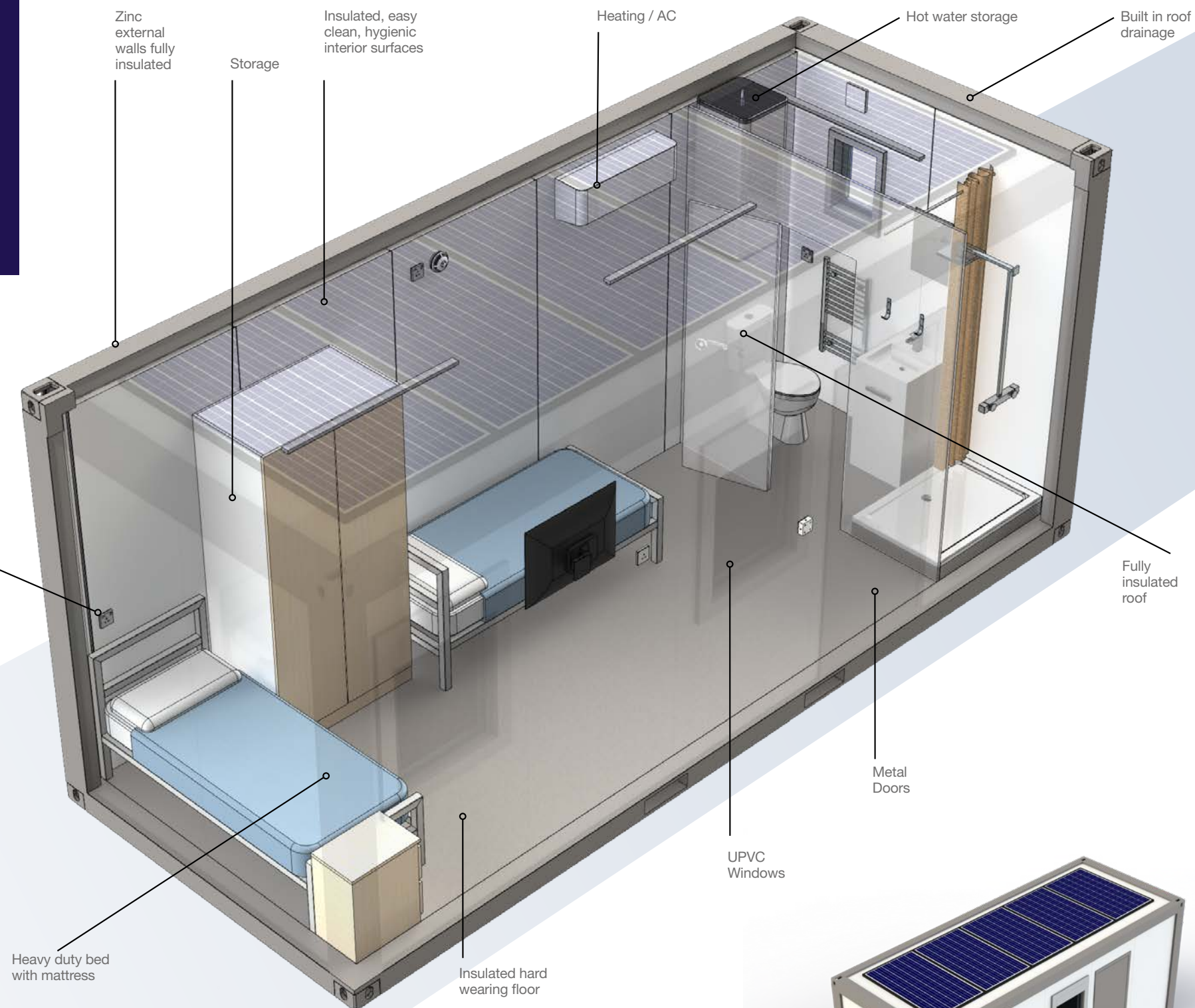
The Ecosmart system keeps power use to a minimum. Roof mounted solar panels reduce power load on local or grid power.





# Ecosmart Sleeper 20

Double  
sockets +  
USB device  
charger



## Inside

### Technical

- Consumer units with electrical certificate
- 230 volt - 32 amp inlet
- 110mm waste outlet
- 15mm water inlet
- All plumbing WRAS approved
- Water storage heater

### Bathroom

- Shower head
- Shower tray with curtain and thermostatically controlled mixer
- Sink, mixer tap and mirror
- High level window
- Ventilation extractor
- Heated towel rail
- Low flush WC & toilet roll holder
- Coat hooks
- LED lights with PIR sensor or pull cord
- Heavy non-slip duty vinyl floor

### Bedroom

- 2x Heavy duty bed with mattress
- Smart TV
- LED lighting
- USB and electric sockets
- Smoke, heat & CO detector
- Heating & Air conditioning

## Outside

**Walls:** 100mm Insulated rock wool with zinc coated steel plate. Class A non combustible.

**Roof:** 100mm Insulated rock wool with zinc coated steel plate. Class A non combustible. Built in gutter and drainage system. Solar Smart panel system.

**Floor:** 100mm Insulated rock wool with zinc coated steel plate, damp proof film, 19mm fibre cement & 2mm pvc floor. Class A non combustible.

**Windows:** UPVC with built in shutter / blinds

**Door:** 840mm x 2035mm outward opening door

**Size & Weight:** L6055mm W2435mm H2896mm  
Weight 2000kg



W 2435  
L 6055  
H 2896

Dimensions (mm)



Optional - UK Building  
Regulations Compliance



USB charger sockets



OPTIONAL - Glass shower doors

Bathroom (alternative layout shown)



Storage

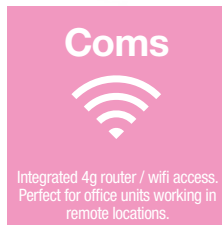






## Upgrades & optional extras

- Exterior vinyl wrap or cladding
- Exterior Decals / Branding
- Exterior LED lighting (over doors)
- Fire extinguisher
- Bespoke design available
- Unit colour schemes
- Shower doors
- Under bed storage drawers
- Waste tanks
- Power Solutions (listed blow)



**Connect Battery Pods with Solar Smart Panels & Solar Pods to save more energy.  
Power large and small sites. Scale up or down with your project needs.**



Solar Pod



Battery Pod



Solar Smart

Award winning welfare  Designed & built in the UK



[www.easycabin.co.uk](http://www.easycabin.co.uk)

01582 486663

[info@easycabin.co.uk](mailto:info@easycabin.co.uk)



DESIGNED & BUILT IN THE UK

EasyCabin Head Office & Factory, Unit 10, Cosgrove Way, Luton, Beds, LU1 1XL

As part of our on-going commitment to improvement we reserve the right to alter specifications, designs or figures, without prior notice. All dimensions and weights are approximate.

Cabins sited for more than 28 days may require planning permission. However, they are a portable structure and we advise that you speak to your local planning office. It is the user's responsibility to organise any required planning permission.

v-03/2023