

## EcoMod



COMFORTABLE - CONTEMPORARY

# Modular Accommodation

High specification, quality accommodation  
for permanent or temporary eco-living.



Plug and play



Warm & comfortable

**Ecosmart  
technology**

Intelligent, efficient  
operation.

UP TO  
**X4**  
PERSONS

Shared or  
Family living spaces

**Built for a  
tough life**

Galvanized,  
high strength,  
composite panels



Roof mounted  
solar panels

**SAP  
Rating  
81B**



# Housing units

Our units are specifically designed from the ground up to be comfortable, cost and energy efficient

## Build quality

AJC EasyCabin Ltd offers a quality 'MMC' (Modern Method of Construction) Temporary Housing.

Our units are entirely built and designed in the UK to the best standards and quality .

Steel construction using energy efficient insulation in walls roof and floor.

All units are "stackable", however we recommend a maximum of 2 Floors.

Units are installed on pads foundations offering an accurate, cost effective, and environmentally friendly foundation solution.

## Sustainable energy

AJC EasyCabin have a proven track record and are winners of several Green Apple Environmental awards.

AJC EasyCabin units utilise both Solar and Grid power but uses Smart switching to efficiently optimise energy usage.

'Ecosmart' technology is built in all AJC EasyCabin units as standard, managing power demands in the most efficient way possible.

LED Lighting & efficient appliances are used throughout the units. AJC EasyCabin units currently hold an EPC "B" rating.



## EcoMod 2

**2 Bed 34x10**



## EcoMod 1

**1 Bed 26x10**

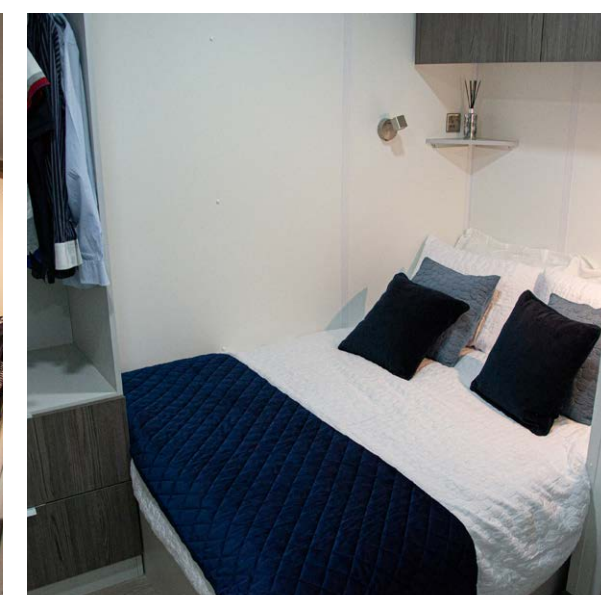


## User comfort & facilities

AJC EasyCabin offer the flexibility of 1 or 2 Bedroom accommodation units, and that meet and exceed building regulation requirements.

Designed and built for warmth & comfort offering unrivalled levels of quality and comfort in temporary accommodation.

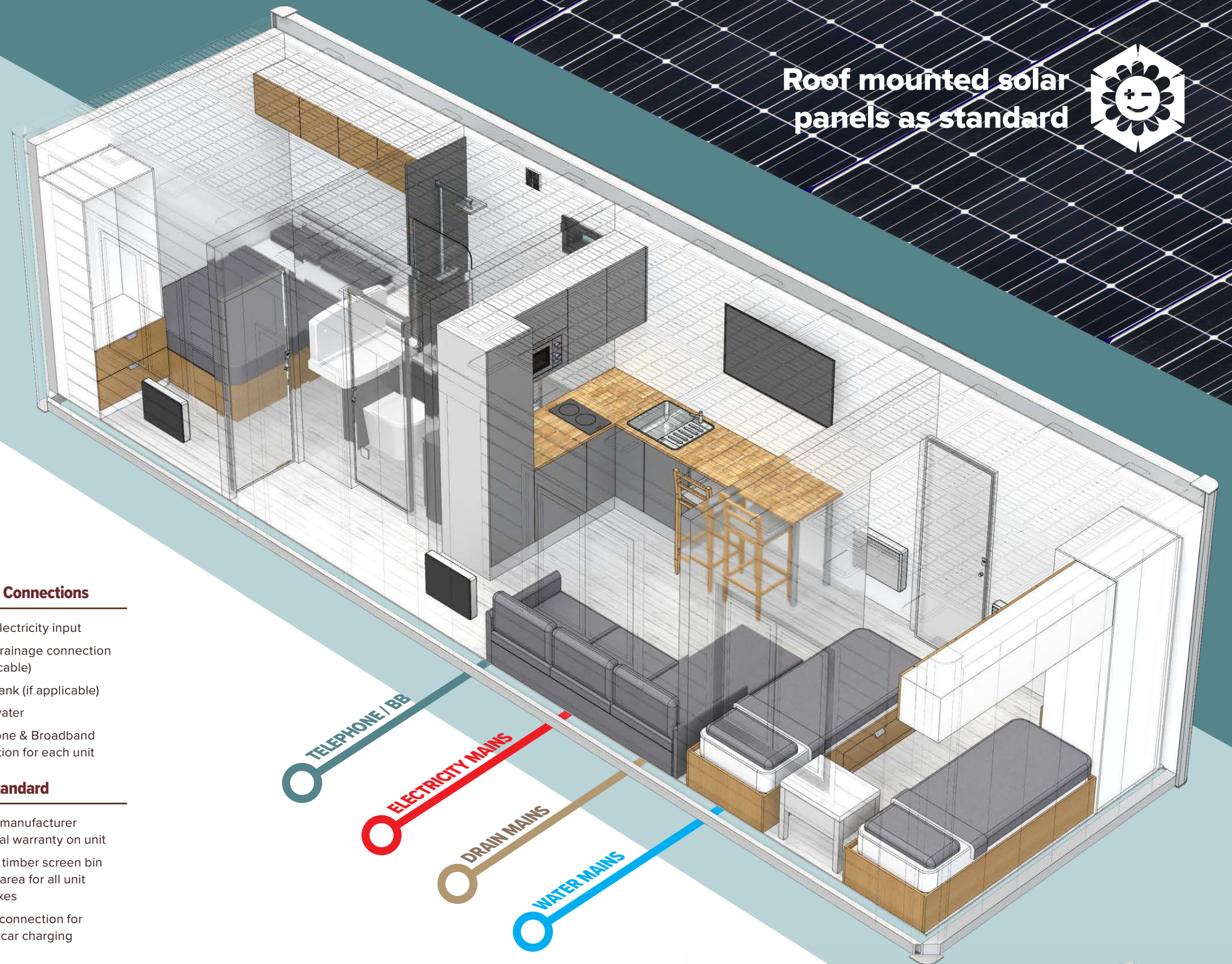
Well equipped and appointed internally with comfortable provision for families.





# Unit features

Available as standard



Roof mounted solar panels as standard



## External

### WALLS:

100mm insulated. Flat-sided heavy-duty steel walls with curved corners. Easy clean interior finish.

### ROOF:

100mm insulated. Heavy-duty steel roof, easy clean interior finish.

### DOORS:

UVPC door with double glazing and external light.

### FLOOR:

100mm insulated. Plywood finished in grey polyfloor XL.

### WINDOWS:

UVPC double glazed.

### SIZE: 34'X10'

W 3048mm  
L 10365mm  
H 2450mm

### SIZE: 26'X10'

W 3048mm  
L 7950mm  
H 2450mm

## Technical

- LED lights
- PIR sensor in bathroom
- Consumer unit with electrical certificate
- Ecosmart load sensing technology
- 230 volt - 64 amp inlet
- 110mm waste outlet
- 15mm water inlet
- All plumbing WRAS approved

## Power

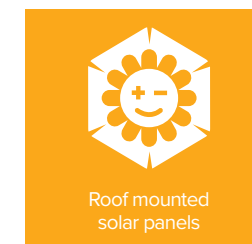
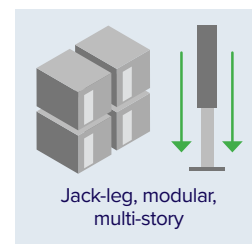
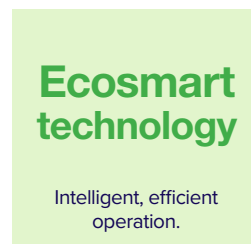
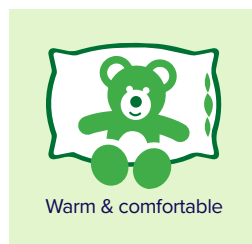
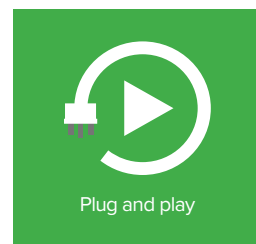
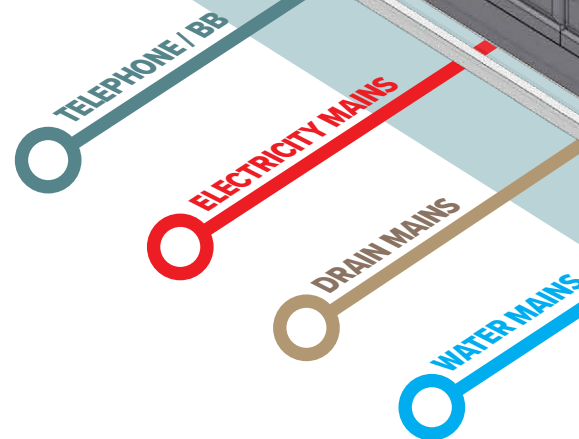
- Solar panels to single story units and to top storey of stacked units as standard
- Ecosmart power switching from mains/solar

## Incoming Connections

- Mains electricity input
- Mains drainage connection (if applicable)
- Septic tank (if applicable)
- Mains water
- Telephone & Broadband connection for each unit

## Also as standard

- 10 Year manufacturer structural warranty on unit
- Treated timber screen bin service area for all unit complexes
- On site connection for electric car charging



Stacking example





# Unit layouts

Comfortably and fully appointed with generous storage and efficient floor-plans



## Bedroom 1

- Double bed
- Wardrobe & storage
- Heating
- Bed reading lights
- USB and electric sockets
- UPVC window with blind
- LED lights

## Bathroom

- Sink, mixer tap and mirror
- Bath with integrated shower with screen
- Wall mounted baby change table
- Ventilation extractor
- Towel rail
- Low flush WC & toilet roll holder
- Coat hooks
- LED lights with PIR sensor
- Heavy duty vinyl floor

## Kitchen area

- High quality work surface
- Combi-oven, kettle, hob, extractor
- Cupboards and storage
- Refrigerator
- LED lights

## Living space

- 2 seat sofa
- TV aerial point
- UPVC window with blind
- Heating
- Dining table with 2 chairs
- LED lights
- 2-3 seat sofa

## Bedroom 2

- 2 Single beds
- Wardrobe & storage
- Heating
- Bed reading lights
- USB and electric sockets
- UPVC window with blind
- LED lights

## General

- Heavy duty vinyl floor
- Smoke & CO detector
- Fire extinguisher

## 1 Bed / 26x10



## 2 Bed / 34x10





# Site example

For illustrative purposes only.  
Site to site characteristics will vary.





# Optional

Customise your units  
inside & out

## Units External Options

- ☐ Choice of RAL paint colours
- ☐ Cladding colour
- ☐ Cladding type
- ☐ No solar panels
- ☐ Rainwater harvesting
- ☐ PIR Security Lights

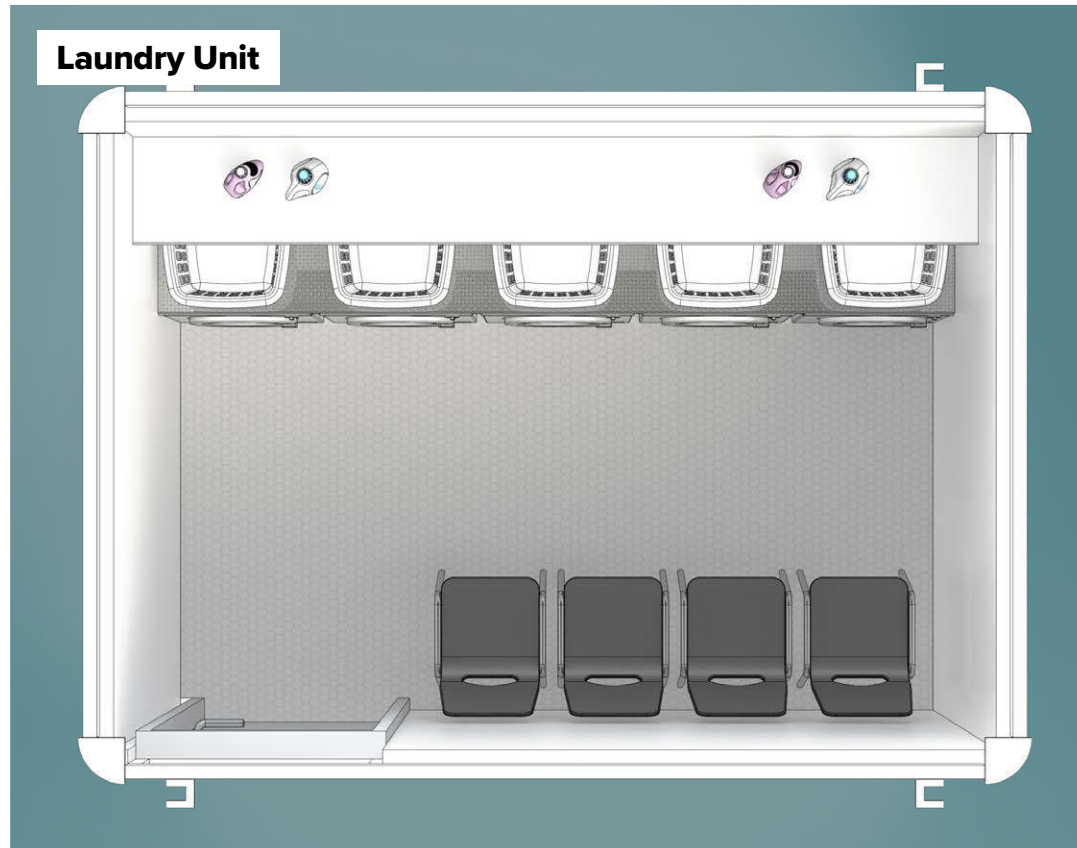
## Units Internal Options

- ☐ Double bed or single bedrooms
- ☐ Extra wardrobe storage
- ☐ Air conditioning
- ☐ Vinyl floor types
- ☐ Kitchen doors colours
- ☐ Kitchen worktop types

## Site Options

- ☐ External fencing
- ☐ Choice of street lighting
- ☐ Laundry Units
- ☐ Bike sheds
- ☐ Landscaping
- ☐ Planting

Further options are available  
please contact us for details.







**Multi-award winning site welfare.**

**[www.easycabin.co.uk](http://www.easycabin.co.uk)    01582 486663    [info@easycabin.co.uk](mailto:info@easycabin.co.uk)**



EasyCabin Head Office & Factory, Unit 10, Cosgrove Way, Luton, Beds, LU1 1XL

#### FOOTNOTES

As part of our on-going commitment to improvement we reserve the right to alter specifications, designs or figures, without prior notice. All dimensions and weights are approximate