



Site power is easy.

Solar Light ZERO^{CO₂}

Store solar energy and use it at night. Zero local emissions, fully automatic, sustainable lighting towers.

Fully automatic operation and ZERO local emissions. During daylight hours solar energy is collected and stored in the batteries.

When in low light or night-time the powerful LED auto activates when movement is detected within 10m of the light. Once the movement has stopped, after a few minutes the light will dim to 20%.

Tower height:	3m fixed or 5m extendable
Lighting area 5m:	Extendable up to 15m wide 10m deep
Lighting area 3m:	10m wide 5m deep
PIR sensor range	10m
Type:	IP65
Lifespan:	50000 hours
Charging time:	6-7 hours
Discharging time:	Over 12 hours
Beam Angle:	120*60 degree
Luminous Efficiency:	110LM/W
CCT:	6500K

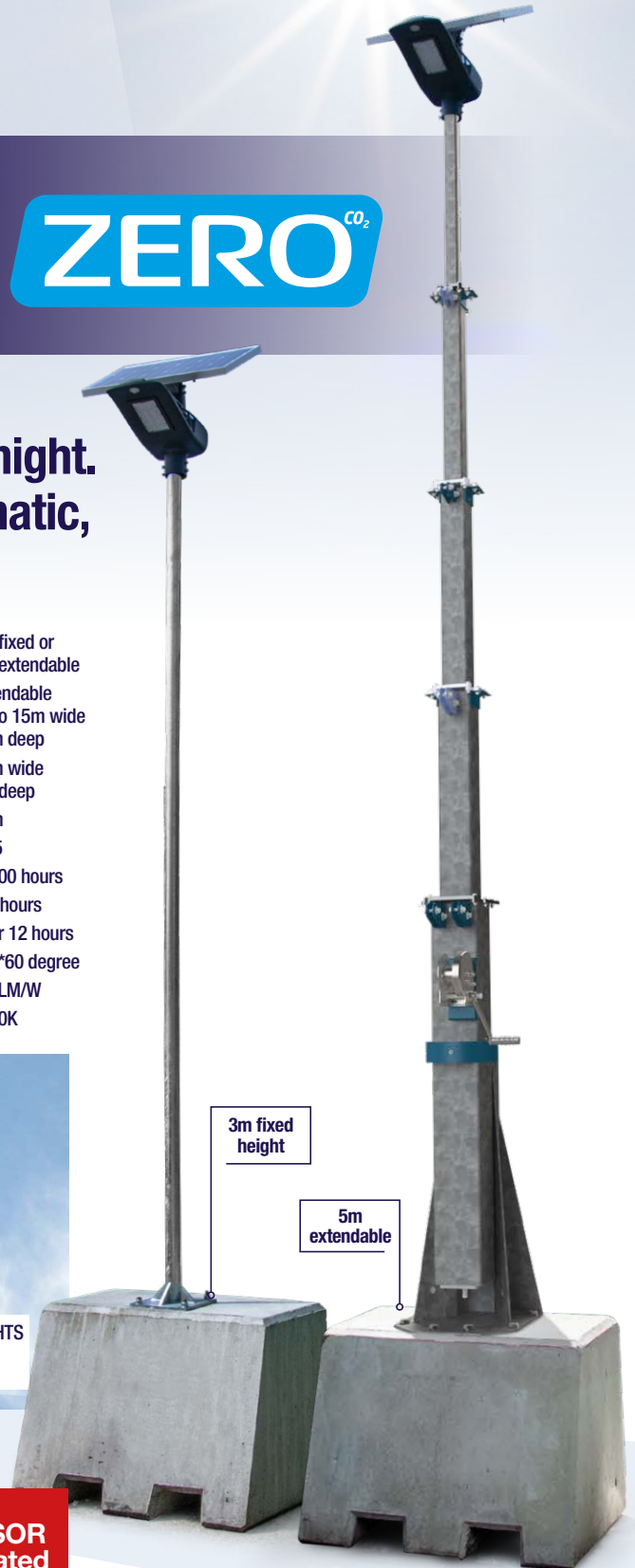


SOLAR PANELS
Harvest the sun's power all day



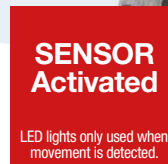
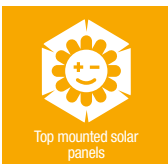
MOVEMENT SENSORS
Auto activation when required

POWERFUL LED LIGHTS
Use less power for maximum light



3m fixed height

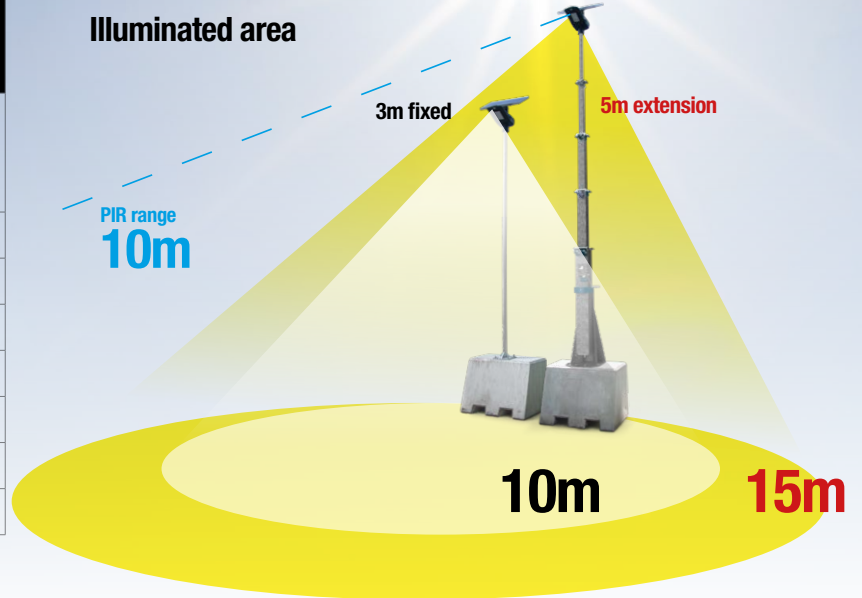
5m extendable



Solar Light ZERO^{CO2}

Technical specifications

Model	SL 3	SL 5 Telescopic
Lighting area	10 metres approx	15 metres approx at full extension
IP rating	IP65	
Unit lifespan	50,000 hours	
Battery charge time	6 - 7 hours (approx)	
Discharge time	Over 12 hours	
Beam angle	120°60 degree	
Luminous Efficiency	110LM/W	
CCT	6500K	



End user review

“ A construction site working in a built up housing area received complaints from residents regarding the noise pollution coming from the generator powered tower-lights during the night.

The solution to the noisy lights was a set of Solar Light ZERO's. They were on-site and setup within 24 hours, ready to illuminate the street with absolutely zero noise & CO² emissions. Problem solved and a good nights sleep for the local residents. ”



Award winning welfare  Designed & built in the UK

AJC EasyCabin



www.easycabin.co.uk 01582 486663 info@easycabin.co.uk

EasyCabin Head Office & Factory, Unit 10, Cosgrove Way, Luton, Beds, LU1 1XL

FOOTNOTES

This assessment is guidance ONLY. As part of our on-going commitment to improvement we reserve the right to alter specifications, designs or figures, without prior notice. All dimensions and weights are approximate.

Carbon emission statistics are from Department for Business, Energy & Industrial Strategy. Greenhouse gas reporting: conversion factors 2019. <https://www.gov.uk/government/organisations/departement-for-business-energy-and-industrial-strategy>